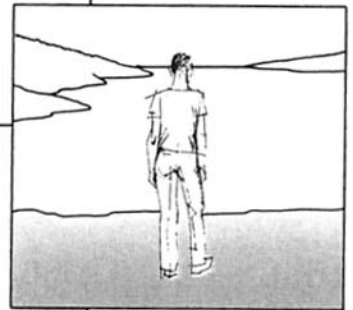
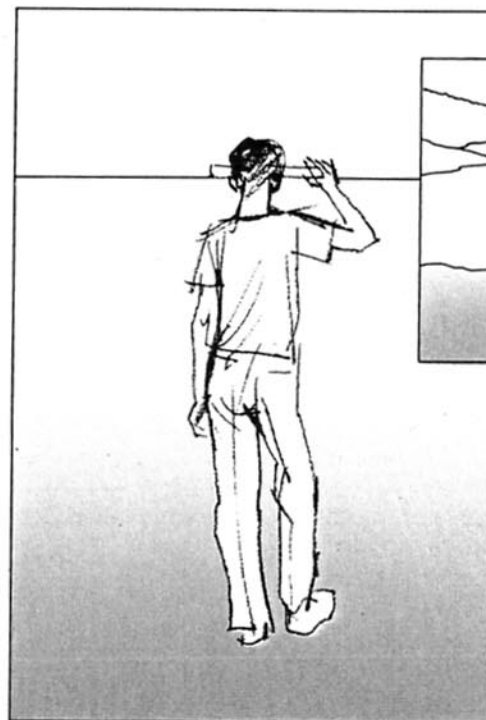
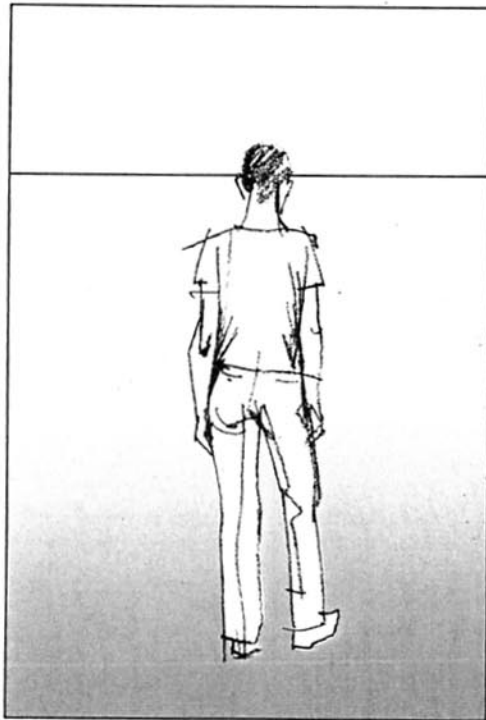
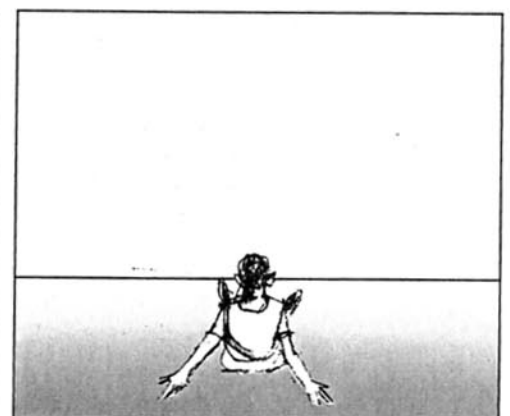
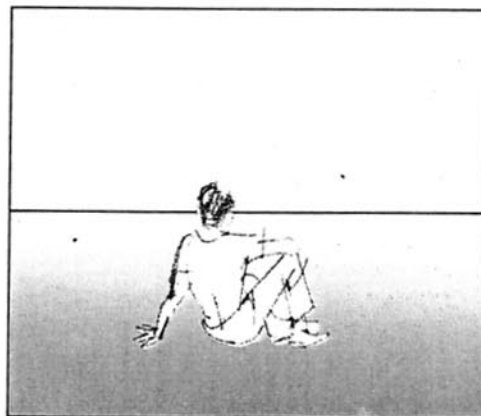
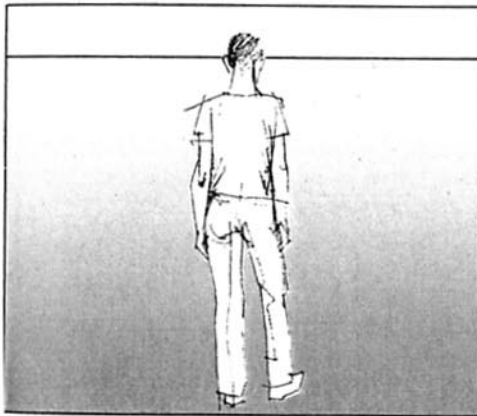


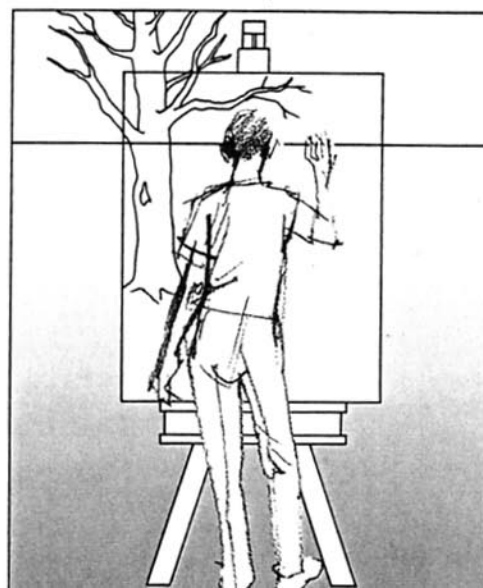
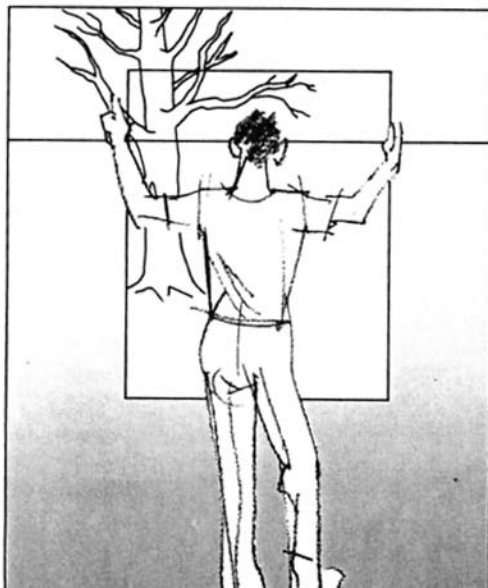
The horizon line occurs at sea level. If you are standing by the sea, you can test this by holding a ruler up at eye-level. You will find that it coincides with the horizon. On land, however, your horizon line will usually be hidden behind undulating ground, but it can still be found and drawn in on the picture plane.



Above, the horizon line can be seen at sea level but it continues behind the shoreline either side.



The three illustrations above show how you can change the horizon line. The higher up you position yourself, the more of the ground plane you can see, and the higher the horizon line will appear. You can try this out for yourself in different positions. The eye-level you choose is dictated by the requirements of the subject matter.



The picture plane can be imagined as a sheet of glass held vertically between you and the subject matter. It is what you see through this plane that you will transpose onto your support. The first step is to draw in the horizon line.