

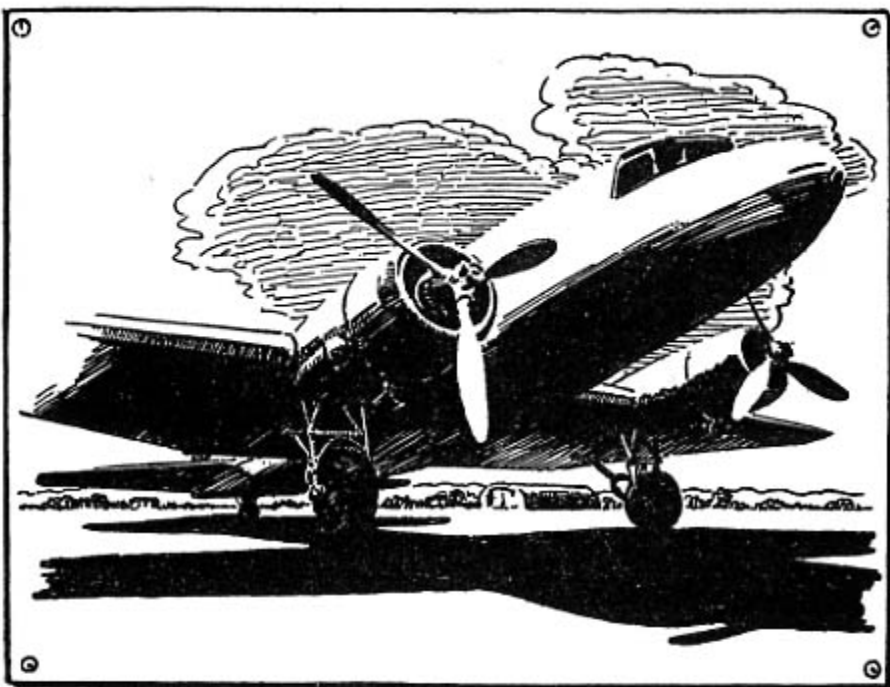
## SHADE

That part of the object that is not directly lighted is often spoken of as the *shaded side*.

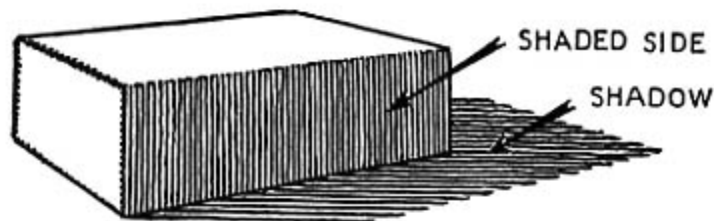
The shade on the object is usually easier to determine on a drawing than is the shadow.

The simple rule for shade is to darken that part of the object that is facing away from the light source.

Shade becomes complex with irregularity of the object.



## SHADOW



A brick lying in the sun stops a portion of sunlight from reaching an area. The dark patch thus formed on the area is the *shadow* of the brick.

The shape of this shadow depends upon three things: the direction of the sun, the position of the brick, the shape of the area on which the shadow falls.

As the sun moves the shadow changes. The brick may be thought of in this instance as a sundial.

If the brick is moved the shadow is changed.